

Top rollers for roving frames and ring frames

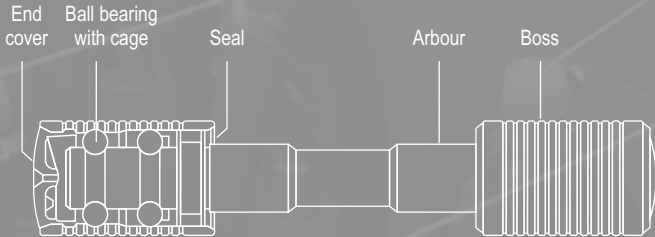


Precision components for spinning machines

Quality • Reliability • Innovation

Top rollers

Top rollers are a pair of anti-friction, double row ball bearings having a common axle. **Each top roller is manufactured such that the clearance between the hardened arbour and shell is perfectly matched with appropriately sized double row steel balls.** The top rollers made for ring frames and speed frames are injected with just the right amount of a special grease – TRG 5. The ends are fitted with a uniquely designed seal to prevent leaks while in operation.



Double row ball bearings with specially designed end seals to prevent grease leakage during use

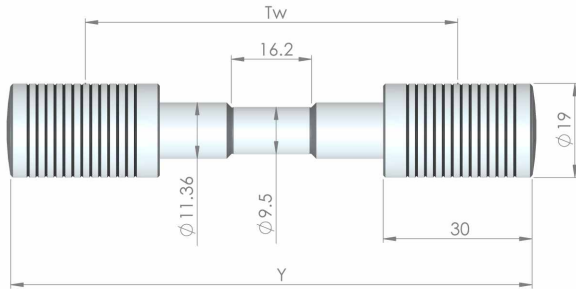
Features of top rollers

- Sturdy double row ball bearings ensure with low friction
- Through hardened components
- Proven effective U-type seal
- Controlled radial clearances
- Lubricated with long life grease TRG 5

Benefits

- Higher load carrying capacity
- Smoother rolling of top rollers resulting in better and consistent yarn quality
- Smoother rotation leading to longer service life
- No ingress of contamination
- Reduced maintenance – extended re-lubrication intervals due to TRG 5 grease

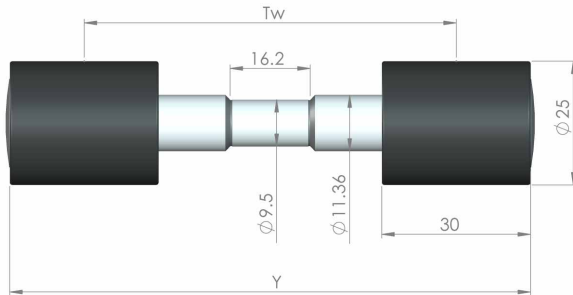
Top roller for short staple ring frames



Type – Ref. No.	Gauge Tw (mm)	Total length Y (mm)	Colour of end cover
LP 302-000684	68.4	98.4	Blue
LP 302-000075	75	105	Blue
LP 302-000825	82.5	112.5	Blue

Application/s

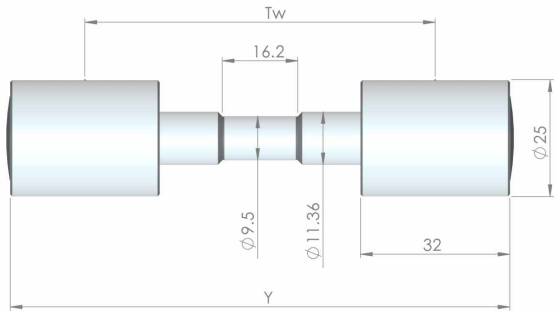
Position/s : Front and rear top roller
 Machine/s : Short staple ring frames
 Process : Spinning
 Weighting arm/s : TeraSpin and SKF PK 2025, PK 2035 and SKF PK 225 and PK 235
 Raw material/s : Cotton, man-made fibres and their blends



Type – Ref. No.	Gauge Tw (mm)	Total length Y (mm)	Colour of end cover
LP S 3683	68.4	98.4	Blue
LP S 3753	75	105	Blue
LP S 3823	82.5	112.5	Blue

Application/s

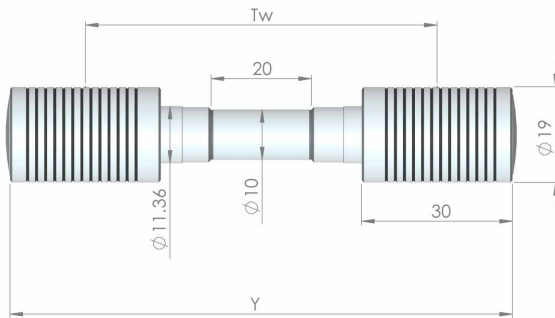
Position/s : Apron top roller (with cot, 80° hardness)
 Machine/s : Short staple ring frames
 Process : Spinning
 Weighting arm/s : TeraSpin and SKF PK 2025, PK 2035 and SKF PK 225 and PK 235
 Raw material/s : Cotton, man-made fibres and their blends



Type – Ref. No.	Gauge Tw (mm)	Total length Y (mm)	Colour of end cover
LP 303-000684	68.4	100.4	Blue
LP 303-000075	75	107	Blue
LP 303-000825	82.5	114.5	Blue

Application/s

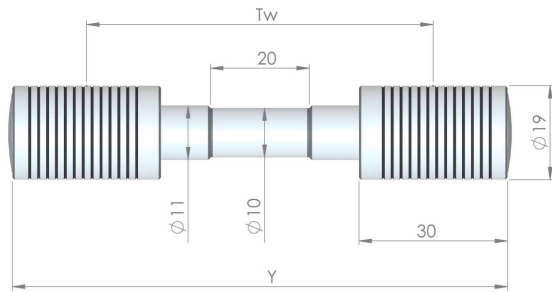
- Position/s : Apron top roller (with steel sleeve)
- Machine/s : Short staple ring frames
- Process : Spinning
- Weighting arm/s : TeraSpin and SKF PK 2025, PK 2035 and SKF PK 225 and PK 235
- Raw material/s : Cotton, man-made fibres and their blends



Type – Ref. No.	Gauge Tw (mm)	Total length Y (mm)	Colour of end cover
LP 302-000070 R	70	100	Orange
LP 302-000075 R	75	105	Orange

Application/s

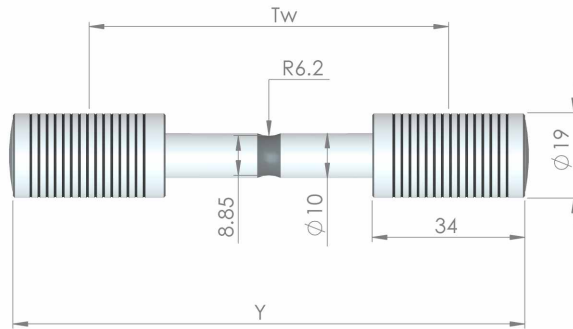
- Position/s : Front and rear top roller as well as apron top roller (with cot)
- Machine/s : Short staple ring frames
- Process : Spinning
- Weighting arm/s : Rieter pneumatic top arms
- Raw material/s : Cotton, man-made fibres and their blends



Type – Ref. No.	Gauge Tw (mm)	Total length Y (mm)	Colour of end cover
LP 302-000070L	70	100	Orange
LP 302-000075L	75	105	Orange

Application/s

- Position/s : Front and rear top roller as well as apron top roller (with cot)
- Machine/s : Short staple ring frames
- Process : Spinning
- Weighting arm/s : Rieter and LMW pneumatic top arms
- Raw material/s : Cotton, man-made fibres and their blends

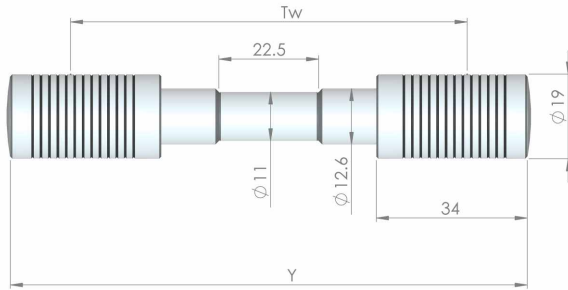


Type – Ref. No.	Gauge Tw (mm)	Total length Y (mm)	Colour of end cover
LP 302-000070 G	70	104	Orange
LP 302-000080 G	80	114	Orange
LP 302-000090 G	90	124	Orange

Application/s

- Position/s : Front and rear top roller as well as apron top roller (with cot)
- Machine/s : Short staple ring frames
- Process : Spinning
- Weighting arm/s : Rieter and LMW pneumatic top arms
- Raw material/s : Cotton, man-made fibres and their blends

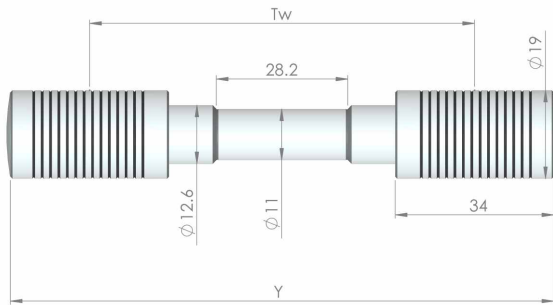
Top roller for worsted ring frames



Type – Ref. No.	Gauge Tw (mm)	Total length Y (mm)	Colour of end cover
LP 314-000075	75	109	Orange
LP 314-000825	82.5	116.5	Orange

Application/s

Position/s : Front and rear top roller
 Machine/s : Worsted ring frames
 Process : Spinning
 Weighting arm/s: TeraSpin and SKF PK 1601-01
 Raw material/s : Wool and its blends with man-made fibres

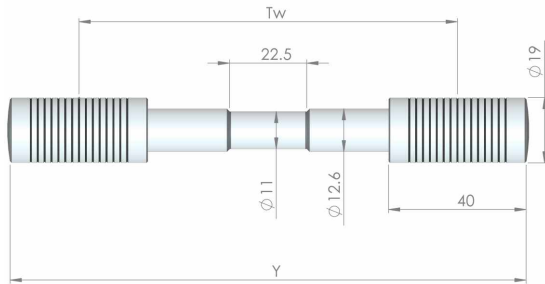


Type – Ref. No.	Gauge Tw (mm)	Total length Y (mm)	Colour of end cover
LP 316-000075	75	109	Orange
LP 316-000825	82.5	116.5	Orange

Application/s

Position/s : Middle (apron) top roller
 Machine/s : Worsted ring frames
 Process : Spinning
 Weighting arm/s: TeraSpin and SKF PK 1601-01
 Raw material/s : Wool and its blends with man-made fibres

Top roller for roving frames



Type – Ref. No.	Gauge Tw (mm)	Total length Y (mm)	Colour of end cover
LP 315-000110	110	150	Blue

Application/s

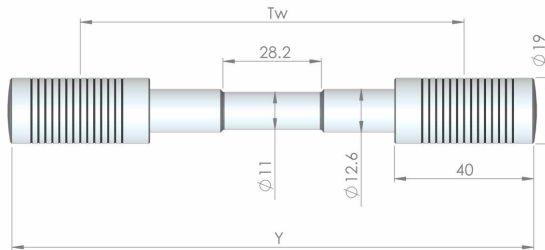
Position/s : Any position other than apron top roller

Machine/s : Roving frames

Process : Spinning

Weighting arm/s: TeraSpin and SKF PK 1500 series and PK 1600-40

Raw material/s : Cotton, man-made fibres and their blends



Type – Ref. No.	Gauge Tw (mm)	Total length Y (mm)	Colour of end cover
LP 317-000110	110	150	Blue

Application/s

Position/s : Apron top roller

Machine/s : Roving frames

Process : Spinning

Weighting arm/s: TeraSpin and SKF PK 1500 series and PK 1600-40

Raw material/s : Cotton, man-made fibres and their blends



A.T.E. ENTERPRISES PRIVATE LIMITED

(Business Unit: TeraSpin)

Survey no. 251, Sarkhej Bavla Highway (N.H. no. 8A), Village: Sari

Taluka: Sanand, Ahmedabad 382 220, Gujarat, India

T: +91-2717-699061 E: sales@teraspin.com W: www.ategroup.com/teraspin

CIN: U51503MH2001PTC132921

