

## Cradles for roving frames and ring frames



Precision components for spinning machines

Quality • Reliability • Innovation

## Cradles

**Cradles discharge the important function:** keeping the apron in position over the rotating apron top roller so that **fibres are effectively guided in the main draft zone**. TeraSpin cradles are made with Fibre Reinforced Plastic (FRP) and metal.

### Features of FRP cradles

- Design ensures gentle nipping and effective fibre control
- Rigid and stable structure for use under mill conditions
- Lighter in weight
- Clean surface for smooth rotation of top aprons
- Can readily replace existing metal cradles

### Benefits

- No danger of deformed cradles being used and hence, no danger of producing poor quality of roving/yarn
- Existing spacers can be used on these cradles
- Consistent roving/yarn quality
- Maintenance-free
- Long life

## Smart Cradles OH S 168 & OH S 175 for ring frames

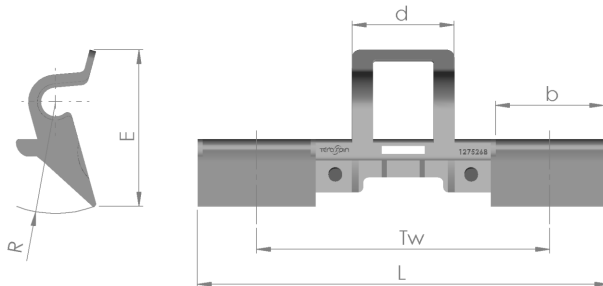
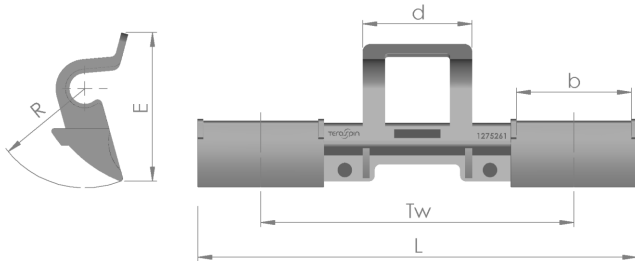
### Features of Smart cradles

- Minimum contact area minimises friction during apron rotation
- Unique design ensures a fixed radius and hence a uniform distance between apron nip and front roller nip
- Accommodates variations in apron length & maintains uniform apron tension

### Benefits

- Reduced yarn imperfections
- Longer apron working life
- Easy apron removal & mounting during maintenance

## Cradles for roving frames



Cradle	Dimensions (mm)					
	Tw	L	R	b	d	E
OH 514 – 1275261	110	154	35	40.5	39.4	50

Cradle	Suitable apron top roller
OH 514 – 1275261	LP 317-000110

### Application/s

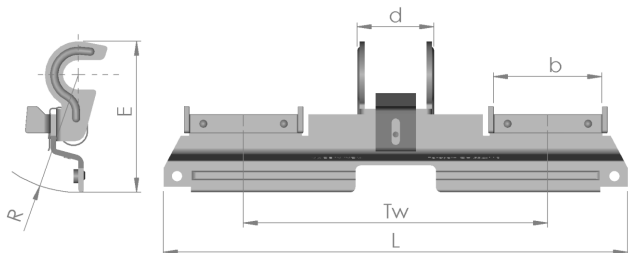
Machine : Roving frame  
 Process : Spinning  
 Weighting arm/s : TeraSpin PK 1500 series and PK 1600-40  
 Raw material/s : Cotton, man-made fibres and their blends  
 Fibre length : Cotton – up to max. 44 mm  
 Man-made fibres – up to max. 40 mm

Cradle	Dimensions (mm)					
	Tw	L	R	b	d	E
OH 534 – 1275268	110	154	45	40.5	39.4	50

Cradle	Suitable apron top roller
OH 534 – 1275268	LP 317-000110

### Application/s

Machine : Roving frame  
 Process : Spinning  
 Weighting arm/s : TeraSpin PK 1500 series and PK 1600-40  
 Raw material/s : Man-made fibres and their blends  
 Fibre length : 45 – 54 mm

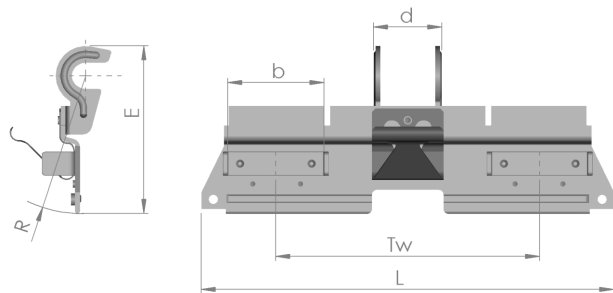


Cradle	Dimensions (mm)					
	Tw	L	R	b	d	E
OH 534 – 000110	110	173	45	40.5	28.6	57.5

Cradle	Suitable apron top roller
OH 534 – 000110	LP 317-000110

#### Application/s

Machine : Roving frame  
 Process : Spinning  
 Weighting arm/s : TeraSpin PK 1500 series and PK 1600-40  
 Raw material/s : Man-made fibres and their blends  
 Fibre length : 45 – 54 mm



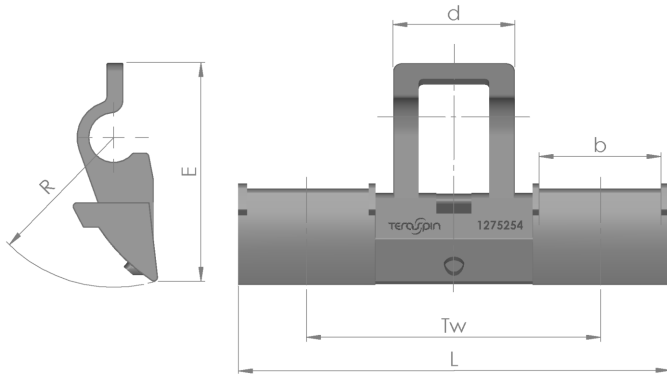
Cradle	Dimensions (mm)					
	Tw	L	R	b	d	E
OH 524 – 000110	110	173	60.5	40.5	28.6	73

Cradle	Suitable apron top roller
OH 524 – 000110	LP 317-000110

#### Application/s

Machine : Roving frame  
 Process : Spinning  
 Weighting arm/s : TeraSpin PK 1500-0962604,  
 PK 1500-0962602 and PK 1600-40  
 Raw material/s : Man-made fibres and their blends  
 Fibre length : 55 – 60 mm

## Cradles for short staple ring frames

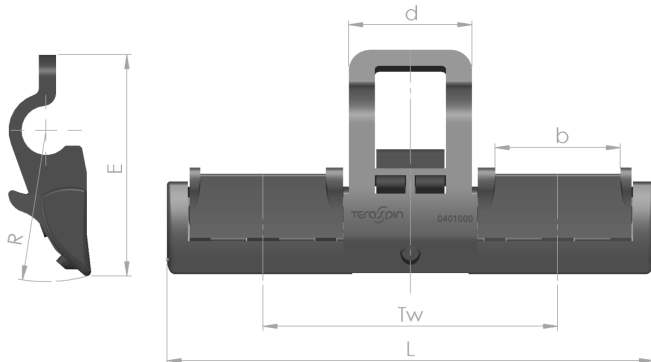


Cradles	Dimensions (mm)					
	Tw	L	R	b	d	E
OH 62 – 1275254	68.4	101	35	28.4	28.4	51.4
OH 62 – 1275267	75	107.6	35	28.4	28.4	51.4

Cradles	Suitable apron top rollers	
OH 62 – 1275254	LP S 3683	LP 303-000684
OH 62 – 1275267	LP S 3753	LP 303-000075

### Application/s

Machine : Cotton ring frame  
 Process : Spinning  
 Weighting arm/s : TeraSpin PK 2025 and SKF PK 225  
 Raw material/s : Cotton, man-made fibres and their blends  
 Fibre length : Cotton – up to max. 44 mm  
 Man-made fibres – up to max. 40 mm

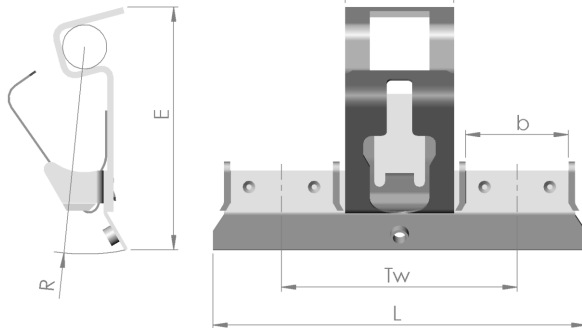
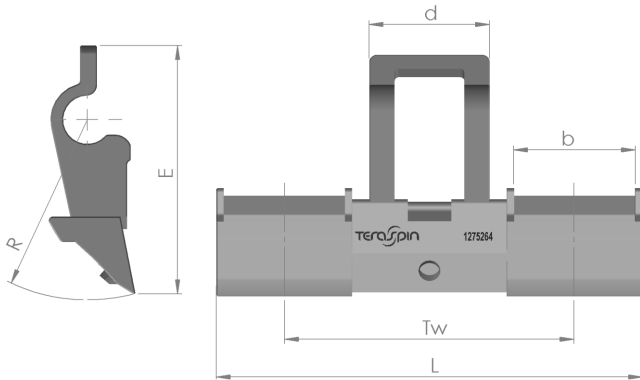


Cradles	Dimensions (mm)					
	Tw	L	R	b	d	E
OH S 168	68.4	113	35	29	28.6	51.8
OH S 175	75.0	115	35	29	28.6	52.0
OH S 1681	68.4	--	39	29	28.6	51.8

Cradles	Suitable apron top rollers	
OH S 168	LP S 3683	LP 303-000684
OH S 175	LP S 3753	LP 303-000075

### Application/s

Machine : Cotton ring frame  
 Process : Spinning  
 Weighting arm/s : TeraSpin PK 2025 and SKF PK 225  
 Raw material/s : Cotton, man-made fibres and their blends  
 Fibre length : Cotton – up to max. 44 mm  
 Man-made fibres – up to max. 40 mm



Cradle	Dimensions (mm)					
	Tw	L	R	b	d	E
OH 131 – 1275264	68.4	100.4	42.5	28.5	28.4	58.5

Cradle	Suitable apron top rollers
OH 131 – 1275264	LP S 3683 LP 303-000684

#### Application/s

Machine : Ring frame  
 Process : Spinning  
 Weighting arm/s : TeraSpin PK 2035 and SKF PK 235  
 Raw material/s : Man-made fibres and their blends  
 Fibre length : 45 – 54 mm

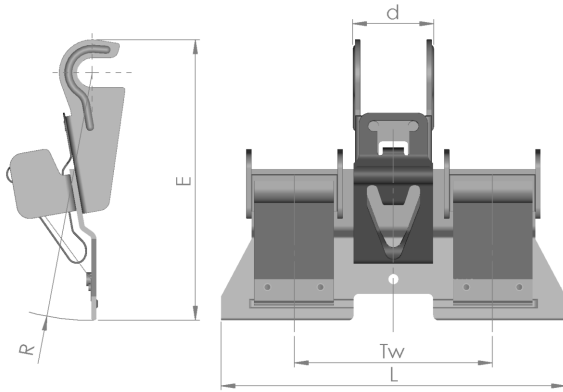
Cradle	Dimensions (mm)					
	Tw	L	R	b	d	E
OH 121 – 000684	68.4	103	58.3	28.4	30	69

Cradle	Suitable apron top rollers
OH 121 – 000684	LP S 3683 LP 303-000684

#### Application/s

Machine : Ring frame  
 Process : Spinning  
 Weighting arm/s : TeraSpin PK 2035 and SKF PK 235  
 Raw material/s : Man-made fibres and their blends  
 Fibre length : 55 – 60 mm

## Cradle for worsted ring frames



Cradle	Dimensions (mm)					
	Tw	L	R	b	d	E
OH 554 – 000075	75	130	88.1	32.4	28.6	101

Cradle	Suitable apron top roller
OH 554 – 000075	LP 316-000075

### Application/s

Machine : Worsted ring frame  
 Process : Spinning  
 Weighting arm/s : TeraSpin PK 1601-01  
 Raw material/s : Wool and its blends with man-made fibres  
 Fibre length : Up to 200 mm max.



### A.T.E. ENTERPRISES PRIVATE LIMITED

(Business Unit: TeraSpin)

Survey no. 251, Sarkhej Bavla Highway (N.H. no. 8A), Village: Sari

Taluka: Sanand, Ahmedabad 382 220, Gujarat, India

T: +91-2717-699061 E: sales@teraspin.com W: www.ategroup.com/teraspin

CIN: U51503MH2001PTC132921

