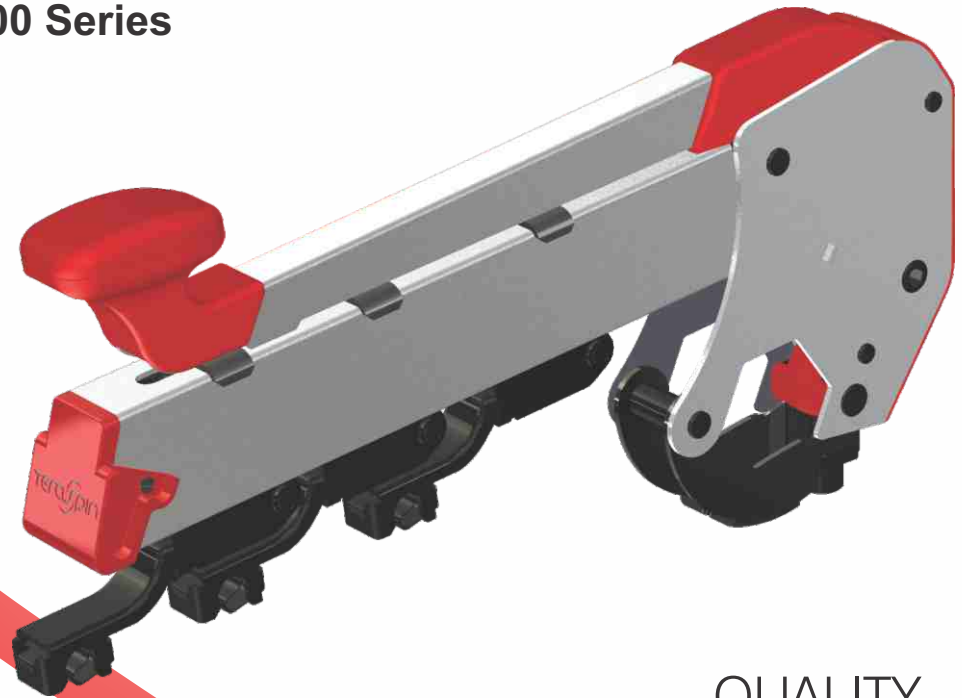


Flexi Weighting Arms

PK S 3200 Series



QUALITY
RELIABILITY
INNOVATION

Spinning mills use pneumatic weighting arms and/or mechanical (spring loaded) weighting arms on their ring frames. **Spring loaded mechanical weighting arms are usually preferred as they are maintenance free and also more reliable** in handling most textile fibers. As **spring loaded weighting arms** do not use compressed air, they **do not consume energy**. Hence, these weighting arms offer a **more sustainable solution** compared to pneumatic weighting arms. The yarn quality is also better and more consistent over a period of time.

Ring frames originally equipped with pneumatic weighting arms may be switched over to mechanical weighting arms that can handle all fibres with ease and better operating performance. With no compressors, hoses, etc., mechanical weighting arms save a sizeable recurring operations and maintenance cost! However, the one time cost of such conversions was a major deterrent for spinning mills to make a decision switch over.

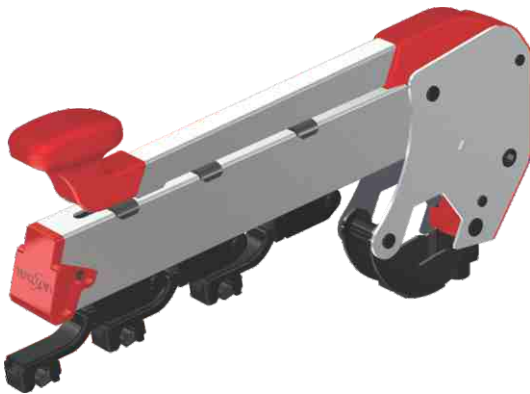
TeraSpin's Flexi weighting arms address these challenges. The PK S 3200 series Flexi weighting arm for short staple ring frames offers maximum flexibility and can be retrofitted onto the existing arrangement of a mill's ring frames with existing drafting components. This enables the most economical changeover from pneumatic drafting systems to the more reliable and flexible mechanical drafting.

Features:

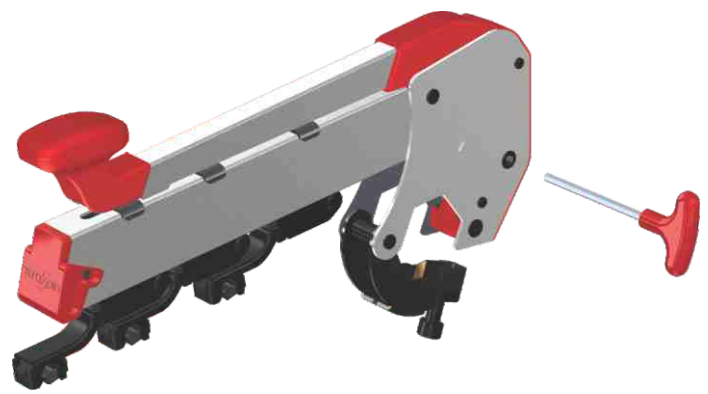
- Fits on the existing hexagonal tube of a pneumatic drafting system
- Accommodates the existing top rollers
- Easy height (pressure) setting
- Consistent reliable loading through helical springs
- Options of 5 different loads on each top roller
- Easily replaceable weighting elements
- Adjustable front roller offset

Benefits:

- Minimal investment and better payback
- Consistent loads delivering consistent yarn quality
- Ease of installation and retention of existing components
- Ease in maintenance – no pressure checking/ losses due to compressor and change of cot diameters
- Flexibility to handle wide variety of fibres/yarn counts to suit today's fashion industry demand
- Attractive price:performance ratio
- Longer reliable service life
- Contributes to your initiative of sustainable solutions in the textile industry



PK S 3200 series



Easy installation and height setting

Variants

PK S 3220	For short cradle, existing top rollers
PK S 3225	For medium/long cradle, existing top rollers
PK S 3224	For short cradle, suitable for H-Fang Compact
PK S 3226	For short cradle, suitable for LMW Spinpact

Manufactured by:



A.T.E. ENTERPRISES PRIVATE LIMITED

(Business Unit: TeraSpin)

T: +91-2717-699061 E: sales@teraspin.com

W: www.ategroup.com/teraspin

Marketed and sold by:



A.T.E. ENTERPRISES PRIVATE LIMITED

T: +91-22-6676 6100 E: poacc@ategroup.com

W: www.ategroup.com

CIN: U51503MH2001PTC132921

